

1.+2.Fagott

Metamorphosen

Volkmar Fritsche

1. Tempo quasi Andante, Dynamik quasi piano

First musical staff (measures 1-5) in bass clef, 2/4 time. The melody consists of eighth notes. A dynamic marking *p* is placed below the first measure.

Second musical staff (measures 6-10) in bass clef, 2/4 time. The melody continues with eighth notes and some accidentals.

Third musical staff (measures 11-15) in bass clef, 2/4 time. The melody continues. A dynamic marking *cresc. poco a poco* is placed below the first measure of this staff.

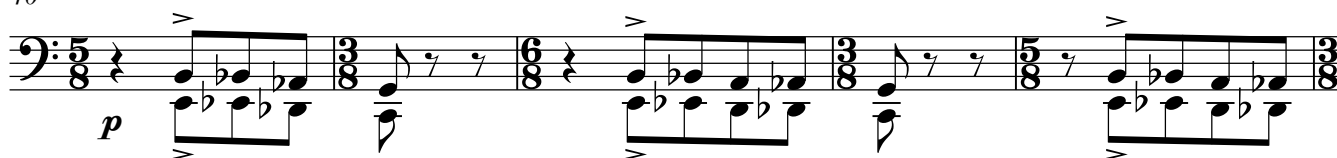
Fourth musical staff (measures 16-20) in bass clef, 2/4 time. The melody continues. A dynamic marking *cresc.* is placed below the first measure of this staff.

Fifth musical staff (measures 21-26) in bass clef. Measure 21 has a circled number 21 and a '4' below it. Measure 25 has a circled number 25. Measure 26 has a circled number 26 and the tempo marking **Largo** above it. The melody consists of long, sustained notes. Dynamic markings *pp* and *fff* are placed below the staff with a crescendo hairpin.

Sixth musical staff (measures 30-35) in bass clef. Measure 30 has a circled number 30 and the tempo marking **a tempo (Andante)** above it. Measure 32 has a circled number 32 and a '3' below it. Measure 35 has a circled number 35 and the tempo marking **Largo** above it. The melody consists of long, sustained notes. Dynamic markings *f* and *ff* are placed below the staff with a crescendo hairpin.

Seventh musical staff (measures 38-39) in bass clef. Measure 38 has a circled number 38. Measure 39 has a circled number 39 and the tempo marking **Scherzando (♩=ca.180)** above it. The staff shows a key signature change to one sharp and a time signature change to 3/8.

40



45

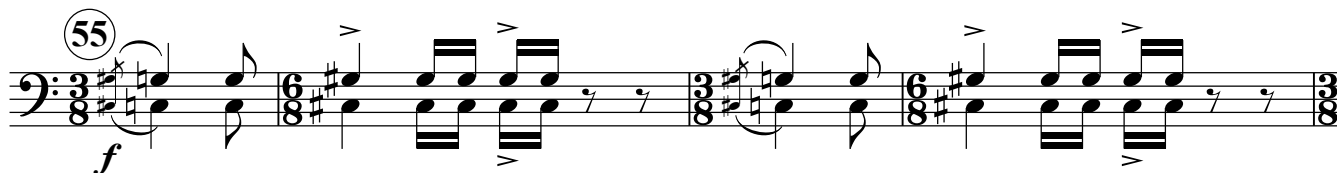
47

poco a poco cresc.

50



55



59



63

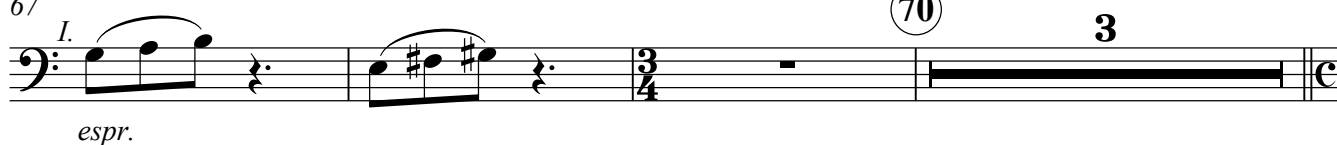
65



67

70

3



73

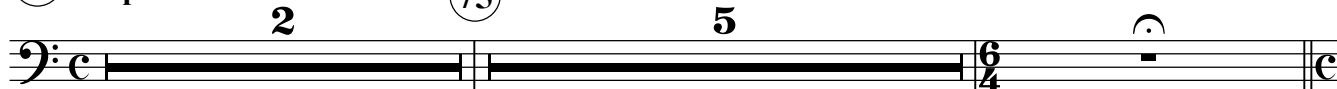
un poco lento

2

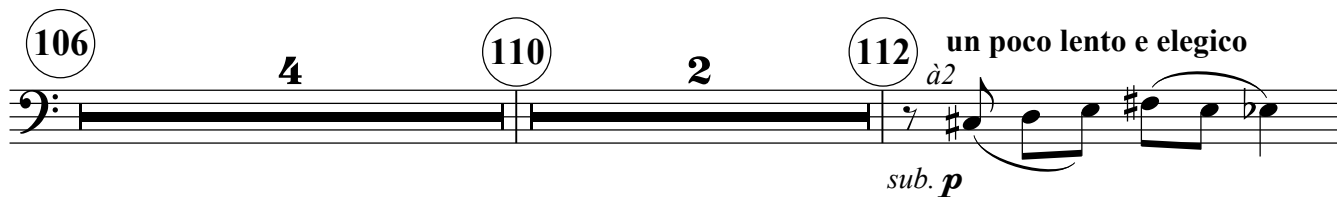
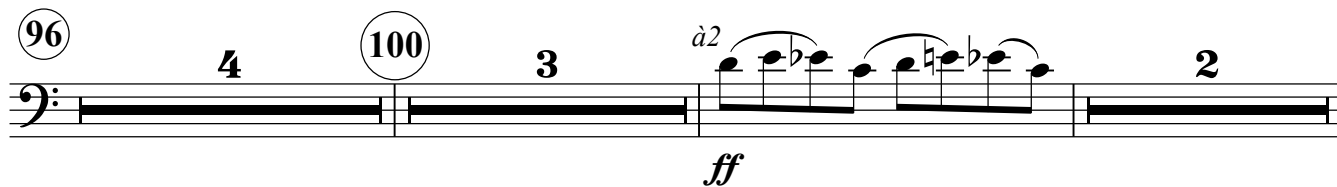
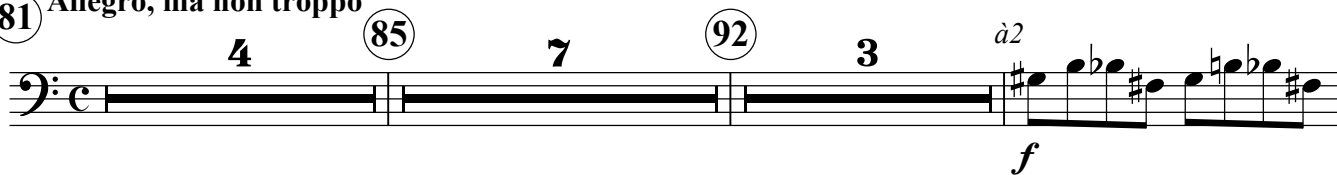
75

ancora più lento

5



Feroce ♩=ca.106
 81 Allegro, ma non troppo



143

ff

146

148

3

152

4

mf

158

160

f

164

6

pp

173

Larghetto

pp

178

p

183

2

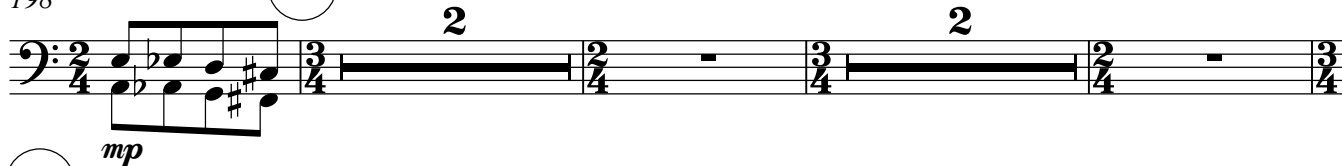
190

2

pp

198

199



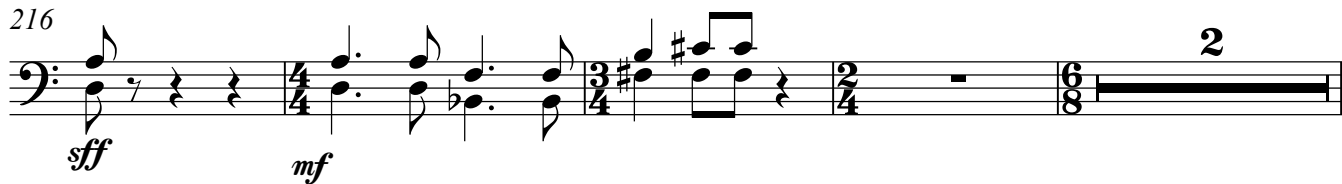
205



211



216



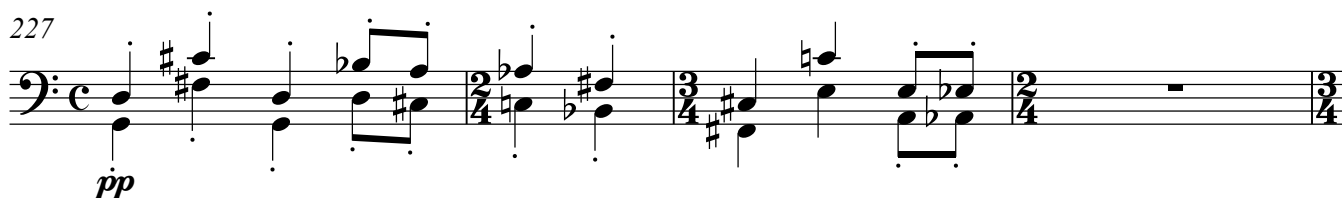
222

tempo corrente

223



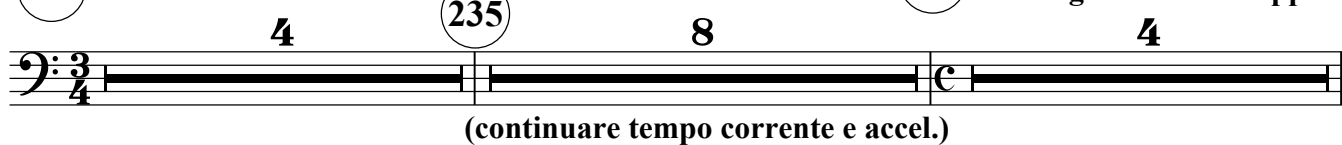
227



231

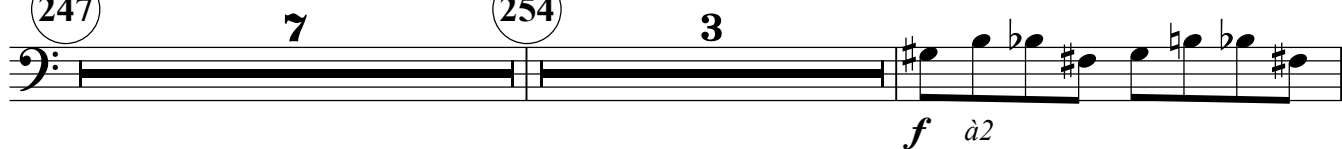
235

243

Feroce Tempo I
Allegro ma non troppo

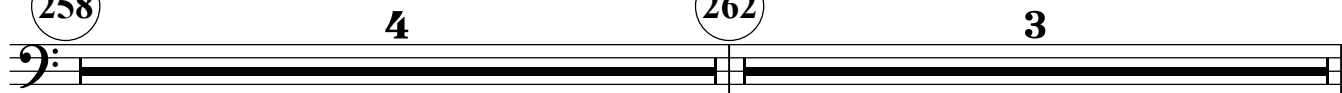
247

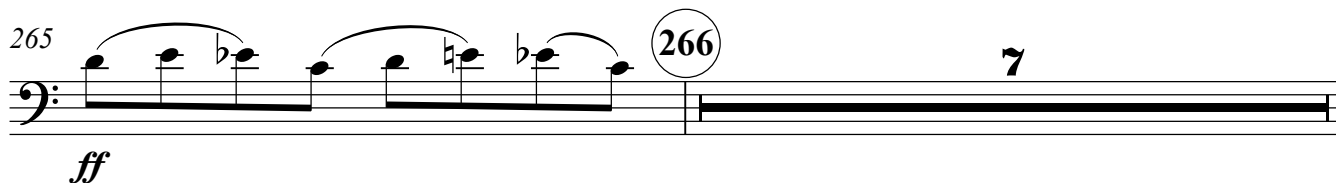
254

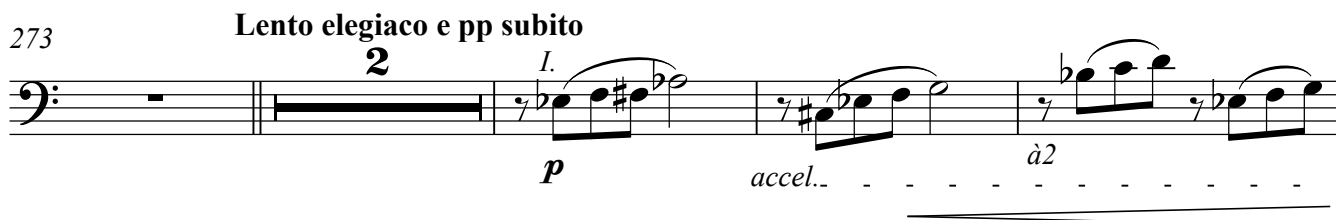


258

262




265  **266** **7**
ff

273 **Lento elegiaco e pp subito**
2 *I.* *p* *accel.* *à2*


279 a tempo I (♩=106) molto espressivo

 *mf*

286 **288** **2** *mf*


293 **294** *f* *mf* *simile*


tempo mosso
un poco scherzando
300 **302** **10** **2** *molto rit.*


314 **315** a tempo *pp* *ff*


320 **3** **3** *(sempre ritenuto)* **2**


325

2

Allegro

2

4

3

3

4

</